



HOPE SPRINGS ETERNAL

An Exhibition and Sale
May 6–28, 2021

HOPE SPRINGS ETERNAL

An Exhibition and Sale May 6–28, 2021

QUESTROYAL FINE ART, LLC

Louis M. Salerno, *Owner*

Brent L. Salerno, *Co-Owner*

Chloe Heins, *Director*

Nina Sangimino, *Assistant Director*

Pavla Berghen-Wolf, *Research Associate*

Jacob Rubin, *Collections Manager*

Kayla Seifert, *Administrator*

Rita J. Walker, *Controller*

(212) 744-3586

galler@questroyalfineart.com

www.questroyalfineart.com

MAY 2021

The most challenging periods in history could not temper the spirit of our painters.

Their vision would not be clouded by any of a multitude of tragedies endured.

They were attuned to an inexorable hope that they sensed in man and nature.

We have searched for those works infused with this inherent optimism, so that in this brightest spring, as we rise above this pandemic, we may look upon the creations of our distinguished artists to rekindle our own spirit.

We invite you to celebrate with us in person or virtually to experience the paintings that remind us that hope truly does spring eternal.

LOUIS M. SALERNO, Owner

Carl Wuermer (1900–1983)

Early Summer

Oil on canvas

25¹/₁₆ x 30¹/₈ inches

Initialed lower right:

Carl Wuermer

\$16,000





John Appleton Brown (1844–1902)
*Celia Thaxter's Garden and View of the Sea,
 Appledore, Isles of Shoals*

Pastel on board

17⁷/₈ x 21⁵/₁₆ inches

Signed lower right:

J. Appleton Brown

\$27,500

Will H. Low (1853–1932)
Montigny-sur-Loing, 1876

Oil on canvas

21³/₄ x 18¹/₈ inches

Dated, signed, and inscribed lower left:

1876 WILL. • H • LOW MONTIGNY sur Loing

\$95,000



Frank Weston Benson (1862–1951)

In the Deep Woods, 1923

Watercolor and gouache on paper

20⁷/₈ x 14³/₄ inches

Signed and dated lower right:

F w. Benson / '23

\$37,500



Louis Ritman (1889–1963)

Nymph in a Boat

Oil on canvas

25¹/₂ x 31³/₄ inches

Signed lower right: *L. RITMAN*;

on verso: *Ritman / Dec 3-25*

\$350,000





Hayley Lever (1876–1958)

Figures on a Dock

Oil on canvas

20 x 23⁷/₈ inches

Signed lower right: *Hayley Lever*

\$45,000



Charles Burchfield (1893–1967)

Mid-Afternoon, 1916

Watercolor and pencil on paper

13⁵/₈ x 19¹/₂ inches

Signed and dated lower left:

Charles Burchfield / 1916;

signed and dated lower right:

.-CEBURCHFIELD-1916;

on verso: \$500 / "MID AFTERNOON" /

14 x 20 / JULY 6, 1916

\$60,000



Jane Peterson (1876–1965)

At the Beach

Watercolor, gouache,
and pencil on paper laid down
on board

7⁵/₁₆ x 9⁷/₈ inches

\$19,000



Jane Peterson (1876–1965)

Beach Umbrellas

Watercolor, gouache, and pencil
on paper laid down on board

7³/₈ x 10 inches

\$19,000



Joseph Stella (1877–1946)
Yellow Lily, 1944
 Silverpoint and crayon on paper
 13³/₄ x 10⁵/₈ inches (sight size)
 Signed and dated lower left:
Joseph / Stella 1944;
 estate stamp upper left
\$12,500



George Inness (1825–1894)
On the Hudson
(The Distant River), ca. 1875–78
 Oil on canvas
 14¹/₁₆ x 12¹/₈ inches
 Signed lower right: *G. Inness*
\$150,000



E. Martin Hennings (1886–1956)

Sunlit Aspen Grove

Oil on canvas

30 ¹/₈ x 30 ¹/₁₆ inches

Signed lower right: *E. Martin / Hennings*

\$155,000



Eric Sloane (1905–1985)

New England Summer

Oil on board

23⁷/₈ x 47³/₄ inches

Inscribed and signed lower left:

NEW ENGLAND SUMMER / Eric SLOANE;
on verso: SKETCH FOR - PICTURESQUE AMERICA GROUP /
Eric SLOANE / CORNWALL BRIDGE, CONN

\$47,500



Luigi Lucioni (1900–1988)
Still Life by the Windowsill, 1933
 Oil on canvas
 18¹/₈ x 16¹/₁₆ inches
 Signed and dated lower left:
Luigi Lucioni 1933

\$95,000



Jane Peterson (1876–1965)
Gloucester Harbor
 Gouache and charcoal on paper
 24¹/₁₆ x 30¹/₁₆ inches
 Signed lower right: *JANE PETERSON*

\$110,000



Alfred S. Mira (1900–1980)

East 14th Street, New York

Oil on canvas

30¹/₁₆ x 24¹/₄ inches

Signed lower right: *Mira*

\$75,000

Edward Dufner (1872–1957)

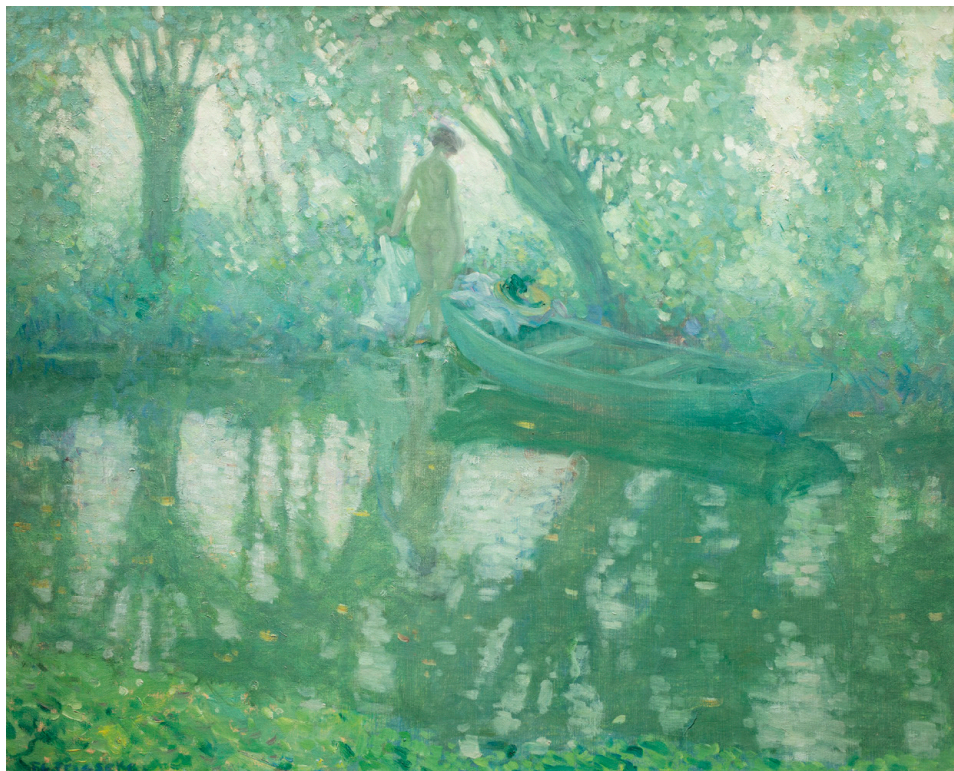
The Old Bureau

Oil on board

9¼ x 7¾ inches

Signed lower left: *DUFNER*;
on verso: *Mrs. Clarence Brown /*
Toledo O. / To Mohr Galleries

\$18,500



Frederick Carl Friezeke (1874–1939)

Summer Afternoon, ca. 1908

Oil on canvas

25⅝ x 32 inches

Signed lower left: *FC. Friezeke.*

\$400,000



Charles Courtney Curran (1861–1942)

On the Shores of Lake Erie, 1893

Oil on canvas

18¹/₈ x 22¹/₈ inches

Signed and dated lower right:

CHAS · C · CURRAN · 1893;

on stretcher bar: CHAS C CURRAN.

\$235,000

Joseph Stella (1877–1946)

Church at Nighttime with Starry Sky

Oil on canvas

11⁷/₈ x 9¹/₂ inches

\$29,000



Marsden Hartley (1877–1943)

Roses

Oil on canvas

18⁵/₁₆ x 14³/₈ inches

Initialed lower left: *M.H.*

\$535,000



Daniel Garber (1880–1958)

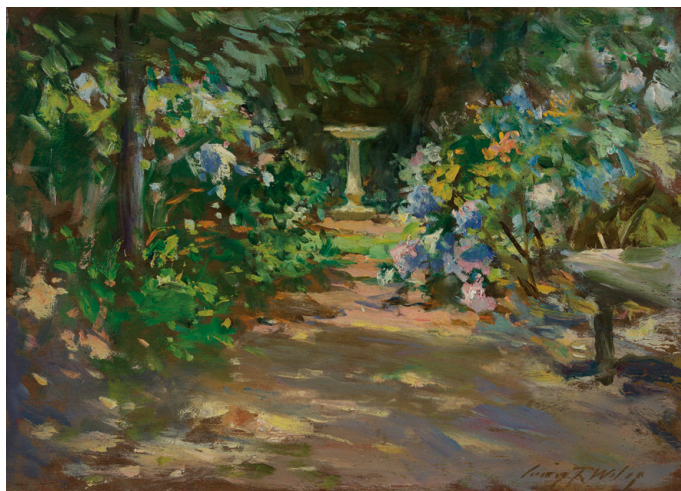
Burning Leaves, ca. 1940s

Oil on canvas

40¹/₁₆ x 36¹/₈ inches

Signed lower right: *Daniel Garber*;
on stretcher bar: *BURNING LEAVES*

\$325,000



Irving Ramsay Wiles (1861–1948)

Pathway in the Garden

Oil on panel

9³/₄ x 13¹⁵/₁₆ inches

Signed lower right: *Irving R Wiles*

\$68,500

QUESTROYAL FINE ART, LLC

Important American Paintings

903 Park Avenue (at 79th Street), Third Floor, New York, NY 10075 T: (212) 744-3586 F: (212) 585-3828

HOURS: Monday–Friday 10–6, Saturday by appointment

EMAIL: galler@questroyalfineart.com www.questroyalfineart.com